

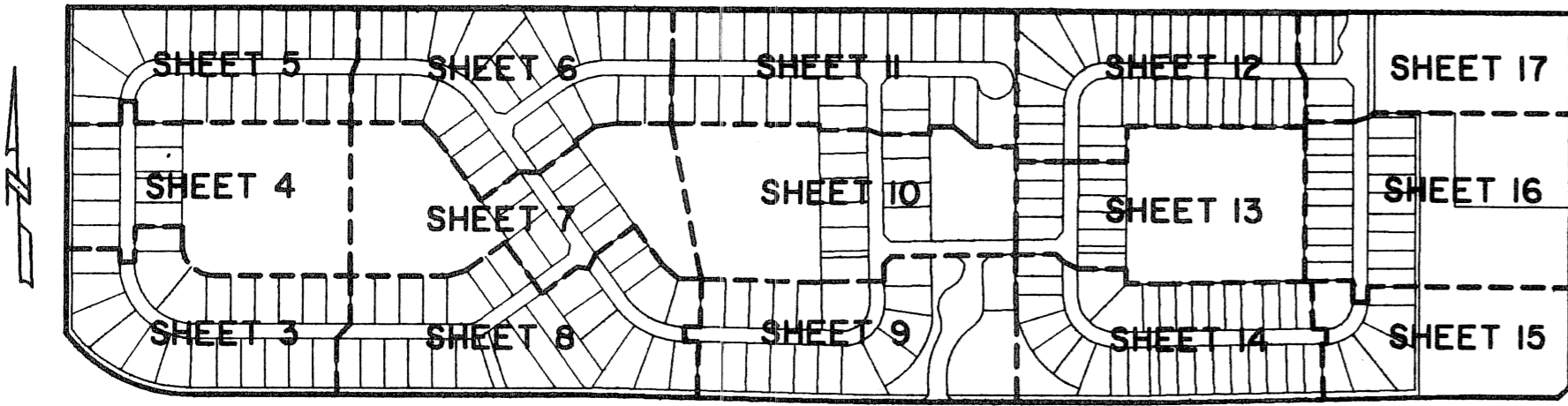
LANIER PROPERTY

LYING IN SECTION 13, TOWNSHIP 44 SOUTH, RANGE 41 EAST,
VILLAGE OF WELLINGTON, PALM BEACH COUNTY, FLORIDA.

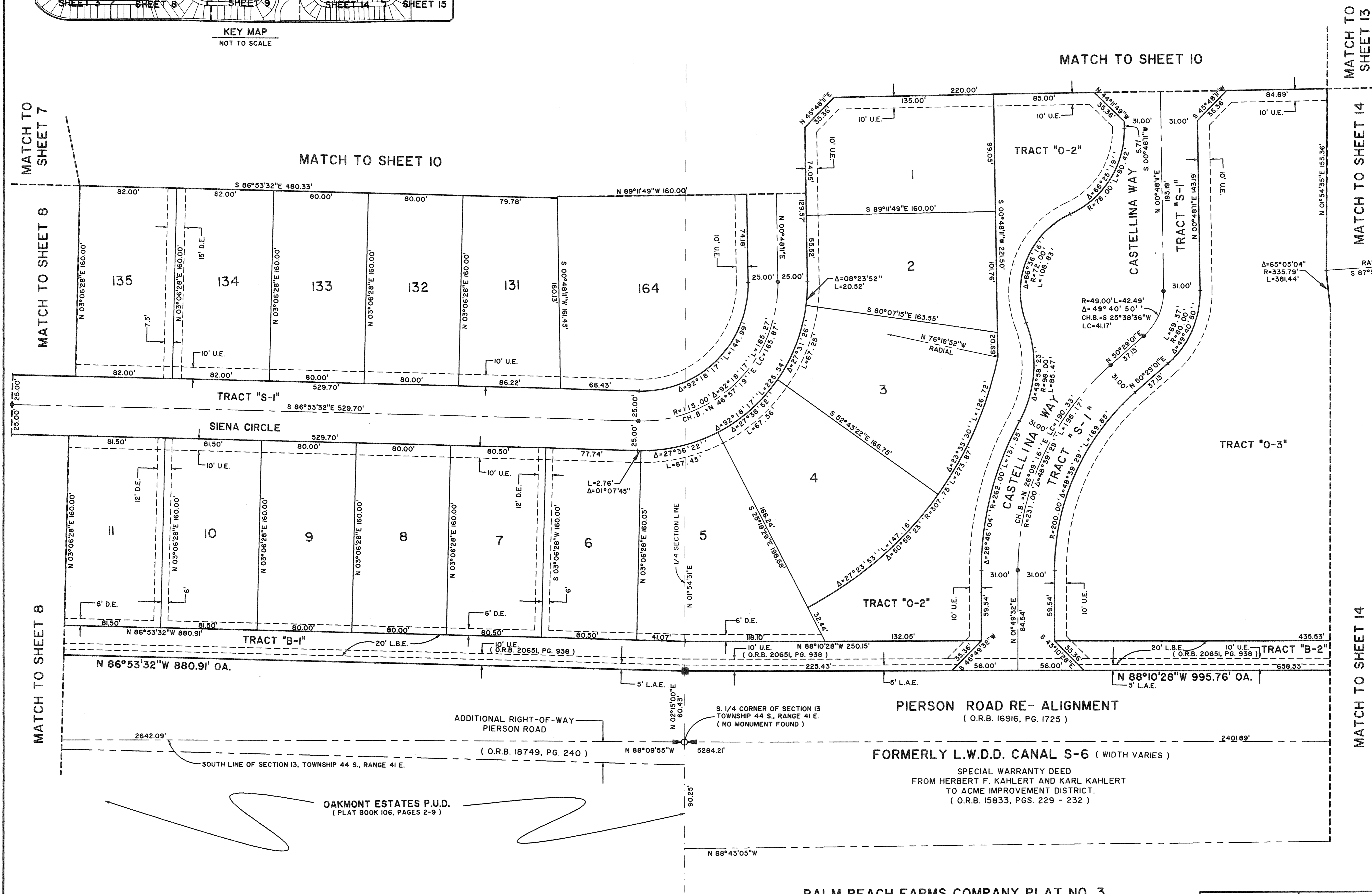
SHEET 9 OF 17

MARCH, 2006

STATE OF FLORIDA SS
 COUNTY OF PALM BEACH
 THIS PLAT WAS FILED FOR RECORD AT _____
 _____ M. THIS _____ DAY OF _____ 2006
 AND DULY RECORDED IN PLAT BOOK NO. _____
 ON PAGE _____
 SHARON R. BOCK,
 CLERK AND COMPTROLLER,
 PALM BEACH COUNTY
 BY _____ D.C.



KEY MAP
NOT TO SCALE



MATCH TO SHEET 7

MATCH TO SHEET 8

MATCH TO SHEET 8

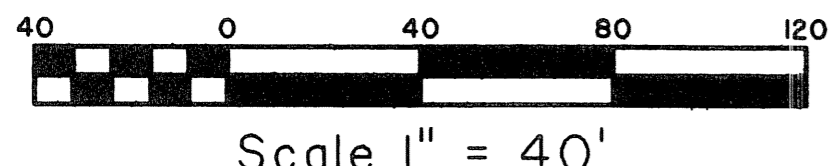
MATCH TO SHEET 10

MATCH TO SHEET 10

MATCH TO SHEET 13

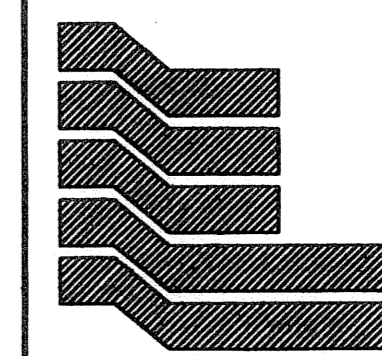
MATCH TO SHEET 14

MATCH TO SHEET 14



Scale 1" = 40'

PALM BEACH FARMS COMPANY PLAT NO. 3
BLOCK 26, TRACT 4
 (PLAT BOOK 2, PAGES 45 - 54)



Landmark Surveying & Mapping Inc.
 1850 Forest Hill Boulevard
 Ph. (561) 433-5405 Suite 100 W.P.B. Florida
 LB # 4396

LANIER PROPERTY